

CLASSROOM RULES

In order to maintain a positive learning environment, the following classroom rules are in place.

- Be Respectful
- Be Responsible
- Be Scholarly
- Participate actively

CONSEQUENCES

First Violation:

Verbal Warning

Second Violation:

writing assignment and Parent Contact

Third Violation:

Parent contact and detention

**Note: Since each situation is unique, consequences may vary. For example, failure to follow lab safety rules will result in immediate suspension from the lab activity and alternative desk work.*

ABOUT THE TEACHER



Ahoy "Familia!", I am Mr. Lopez, and I'm so excited for this school year. I have been teaching Science for 28 years and have been a success coach as well. I am passionate to plant seeds in my students for greatness as we build lasting relationships. My motto is "La Familia," because it embraces family connection and unity for success.

I am blessed with an amazing wife that works as an E.S.O.L. Specialist, and two fantastic children; my daughter is in public relations, and my son is a computer engineer. I truly look forward to serving you.

CONTACT INFORMATION

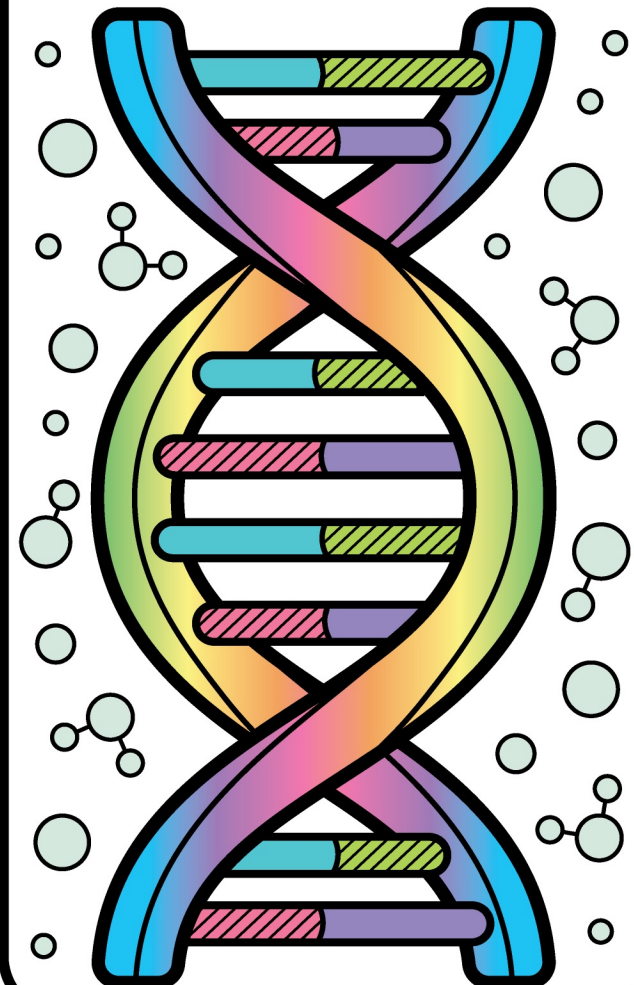
Email: benigno.lopez@hcps.net

Cell #: 813-842-8460

WELCOME TO

6/7TH GRADE

SCIENCE



COURSE DESCRIPTION

The 6th or 7th Grade Science Curriculum follows the Next Generation Science Standards (NGSS). We will explore the following topics:

- Nature of Science
- Engineering Design Process
- Ecosystems

GRADING OVERVIEW

Assignment Category	Grade Percentage
Tests	30%
Labs/Projects	20%
Quiz	10%
Class work	20%
Homework	10%

ABSENCE POLICY

- In the event of an absence, it is the students' responsibility to check Canvas and ask the teacher for any missed assignment.
- Each student will be given the number of days absent to turn in the missing work. For example, if a student misses three days, they will get three days to complete the missed assignment.
- If a student is absent the day an assignment is due, they must turn the assignment in the day they return to school. (flexible)

COURSE EXPECTATIONS

All students are expected to complete projects in class as well as outside of school.

HOMEWORK POLICY

- Homework will be assigned regularly.
- Students are required to write down all homework assignments into their planner.
- All assignments are due at the beginning of the class period on the assigned due date. Late assignments will be deducted as described below:

One Day Late

- 20% deduction from the maximum possible grade

Over three Days Late

- 50% deduction from the maximum possible grade
- Please note flexibility when are emergencies occur

DAILY SUPPLIES

- 1 composition or 2 Spiral Notebook (very important)
- #2 Pencils
- Pens
- Scissors
- Glue Sticks
- Highlighters
- Colored Pencils
- Markers
- Please note the supplies can be used in other classes